



26 McKeachie Drive Aberglasslyn, NSW

3

2

2

Ready to move right in!

What an amazingly affordable opportunity to purchase in Aberglasslyn! This pristine three-bedroom home has been lovingly cared for by the current owners and presents as a fantastic opportunity for first home buyers or growing families. All bedrooms are spaciously oversized, and the whole property is kid & pet friendly with tall fencing which doubles for privacy, making the yard a pleasant and safe space to enjoy. Investors will love this opportunity as the home appeals to such a broad buyer AND tenant demographic, making the home easy to rent out while offering exceptional upside for future capital growth. The home is naturally bright and features a large, open-plan dining and lounge room which is perfect for entertaining or everyday family interaction. Located just a short 350m walk to McKeachie's shops & local daycare, 3km to Rutherford Shopping Centre, Rutherford Public School, and Telarah Station, makes this an even more attractive property for busy families seeking to be close to all amenities. Step beyond its pleasant frontage and find yourself welcomed to a modern floorplan featuring three bedrooms, the master room with large ensuite and walk-in robe, secure double garage with internal access and a great sized modern bathroom with bath, shower, and toilet. The core living, dining and kitchen areas are air-conditioned with

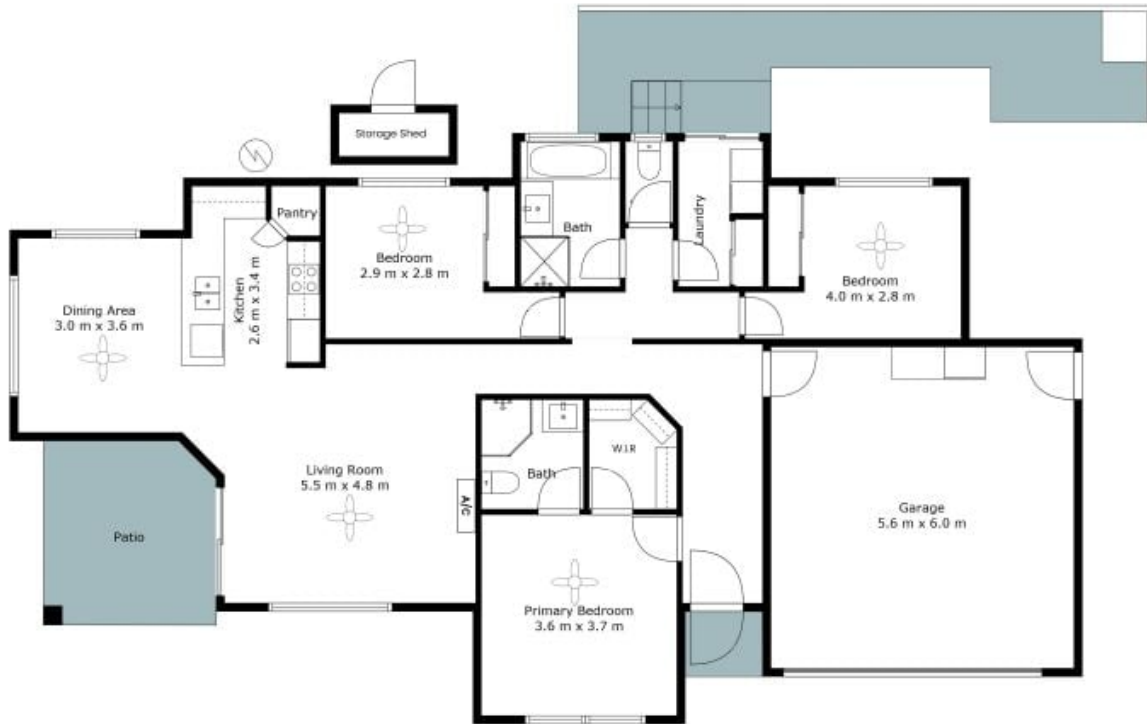
Price: \$610,000 - \$660,000
Inspect: Saturday, 17th August 2024 10:00 - 10:20

Matthew Clarkson
 0456 791 524

Donney Ristevski
 0415 597 002

26 McKeachies Drive
Aberglasslyn

STONE



The site plan and floor plan are not to scale; measurements are indicative and in metres. Bushes and trees are placed for illustration purposes. Plans should not be relied on, interested parties should make and rely on their own enquiries. All other information provided has been collected from reliable sources but cannot be guaranteed for accuracy.

26 McKeachie Drive

Aberglasslyn, NSW

